

## STUDENT ESSENTIAL RESOURCES 2020

Dear Parent/Guardian

The Department of Education and Training has issued specific guidelines, which provide details of those materials and services which parents in general can be expected to pay, such as:

- Student textbooks and print/resource materials in lieu of textbooks
- Student requisites and stationery
- Special materials for programs, eg. Visual Art program

The 2020 parent payment charges have been approved by school council. **For 2020, the Student Essential Resource Items have been costed at \$145.00 per child.** Parents/guardians are responsible for ensuring that their children are provided with essential education items. Kismet Park has spent considerable time selecting appropriate requisitions to meet the needs of our children and we source the most affordable stationery, while making sure we provide excellent quality.

If you wish to source your own Essential Items for the year (books & stationery) please request a booklist which provides clear guidelines of the items required and the quality standard we expect. Please note; payment will still be required for the shared classroom supplies (section B) and you will be invoiced accordingly. *There may also be certain items that due to their nature may only be provided by the school for which parents will be charged.*

As an example: If you wish to purchase your own stationery items for a grade 6 student, you will be invoiced \$103.63 for the shared classroom supplies. *New students to the school would also be charged for a Reading Tub \$8.00 and a Communication Satchel for \$10.00.*

The table below breakdown the 2 different charges that make up the whole Student Essential Resources package for 2020. Section A = Book Pack (stationery) - Section B (compulsory payment) = Shared classroom supplies.

The \$140.00 Student Essential Resources package breakdown is as follows:

Year Level	Section A	Section B	Total
Prep	\$76.02	\$68.98	\$145.00
Year 1	\$74.46	\$70.54	\$145.00
Year 2	\$66.37	\$78.63	\$145.00
Year 3	\$63.11	\$81.89	\$145.00
Year 4	\$53.46	\$91.54	\$145.00
Year 5	\$41.37	\$103.63	\$145.00
Year 6	\$41.37	\$103.63	\$145.00

**Payment for Section A:** will include an individual pack of supplies that have been specifically selected to support the learning needs of children at particular levels of the school.

**Compulsory Payment for Section B:** will include a wide range of materials and requisites for shared use by your children in their classrooms; a range of papers, pastes, other writing and drawing implements, classroom scissors etc., Materials and requisites for the Visual Arts program in the school, eg. A range of papers/card, glues, tools, clay, construction resources, needles, threads, textiles etc., plus Text books, class sets and printed materials in lieu of textbooks.

On receipt of payment by Cash/ Cheque, EFTPOS, BPay or Compass, students can take home their Essential Resources (Section A) and cover and label the items. Please bring all items to school on the first day of school 2020. Items which are supplied on a shared basis (Section B) will be provided in the classroom for your child's use throughout the year.

We ask that all Student Essential Resources payments are finalised by the start of the school year, unless other arrangements have been entered into. Families who do not have an immediate capacity to pay are also able to enter into alternative and confidential payment arrangements with the school. Should you require information about financial assistance please contact the Principal or Business Manager.

*NB: Our Parent Payment Policy is available to view in School Documentation on Compass.*

# Understanding Parent Payment Categories

## Schools

### What does the legislation say?

The Education and Training Reform Act (2006) provides for free instruction in the standard curriculum program to all students in government schools. The Act also empowers school councils to charge fees to parents for goods and services provided by the school to a child.

In the Act, a 'Parent' includes a guardian and every person who has parental responsibility for a child including parental responsibility under the Commonwealth Family Law Act 1975 and any person with whom a child normally or regularly resides.

### What do schools pay for as part of 'free instruction'?



Free instruction is the teaching staff, administration and the provision of facilities in connection with the instruction of the standard curriculum program, including reasonable adjustments for students with disabilities.

The standard curriculum for Years F-10 means implementation of the Victorian Curriculum F-10.

The standard curriculum for senior secondary schools means a program that enables a student to be awarded a VCE or VCAL qualification.

### What principles govern parent payment practice?

Educational Value | Access, Equity & Inclusion | Affordability  
Engagement & Support | Respect & Confidentiality | Transparency & Accountability

## Parents

### What may parents be asked to pay for?

#### Schools can request payment for Essential Student Learning Items



These are items, activities or services that the school deems **essential** to student learning of the standard curriculum.

Where practical and appropriate, parents may choose to purchase items through the school or provide their own.

These may also be either:

#### Items the student takes temporary or permanent possession of

- e.g.
- textbooks, activity books, exercise books
  - stationery, book bags
  - student ID cards, locks
  - cooking ingredients students will consume
  - materials for final products that students take home (technology projects, build-your-own kits, dioramas)
  - Picture Exchange Communication Systems

#### Activities associated with instruction that all students are expected to attend

i.e. travel, entry fees or accommodation

- e.g.
- excursions
  - incursions
  - school sports
  - work placements

Parents can be asked to pay for items, activities and services in the three Parent Payment Categories:

Essential Student Learning Items, Optional Items and Voluntary Financial Contributions.

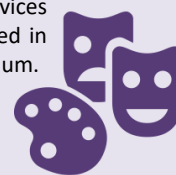
Schools determine how items, activities and services are classified within these categories based on the learning and teaching program of their school.

#### Schools can request payment for Optional Items

These are items, activities or services that are **optional** and are offered in addition to the standard curriculum.

Students may access these on a user-pays basis.

These may be either:



#### Items the student purchases or hires

- e.g.
- school magazines, class photos
  - functions, formals, graduation dinners
  - materials for extra curricular programs
  - student accident insurance

#### Activities the student purchases

- e.g.
- fees for extra curricular programs or activities, such as instrumental music tuition
  - fees for guest speakers
  - camps, excursions, incursions, sports
  - entry fees for school run performances

#### Items and/or materials that are more expensive than required to meet the standard curriculum

- e.g.
- use of silver in metal work instead of copper
  - supplementary exam revision guides

Support for families experiencing hardship is available at every school and each school has a parent payment contact person. See your school's policy for more information.

For more information on Parent Payments and Personal Devices, visit the DET website at: [www.education.vic.gov.au](http://www.education.vic.gov.au)

Schools can invite **Voluntary Financial Contributions** for



- e.g.
- Building or Library fund (Tax deductible)
  - Voluntary contributions for a specific purpose, such as equipment, materials, services.
  - General voluntary contributions



# STUDENT ESSENTIAL RESOURCES COLLECTION DATES

PLEASE BRING THIS FORM WITH YOU TO COLLECT YOUR CHILD'S RESOURCES

### COLLECTION DATES

<b>2019 December:</b>	<b>Wednesday 4<sup>th</sup></b>	<b>9:00am – 5:30pm</b>
<b>2019 December:</b>	<b>Thursday 5<sup>th</sup></b>	<b>9:00am – 3:30pm</b>
<b>2020 January:</b>	<b>Wednesday 22<sup>nd</sup> January</b>	<b>10:00am – 2:00pm</b>

**FAMILY NAME:**

### Student Essential Resources

\$145.00 per child:

Child's/Children's Names

Year Level In 2020

_____	_____	\$ _____
_____	_____	\$ _____
_____	_____	\$ _____
	Subtotal:	\$ _____

### School Council Voluntary Contribution Payment

\$ \_\_\_\_\_



*School Biller Code: 87361*

Total: \$ \_\_\_\_\_

Cash/cheque and Eftpos/credit card facilities are available at the office or you can pay via our Compass app or BPay using the Biller Code and your unique family reference. Please call the school to retrieve your family reference number if you don't already know it.

Thank you,  
Kismet Park Primary School Council





TELEPHONE: (03) 9744 4566  
FACSIMILE: (03) 9744 2560  
P.O. Box 220 SUNBURY 3429  
9-11 McEwen Drive  
[Kismet.park.ps@edumail.vic.gov.au](mailto:Kismet.park.ps@edumail.vic.gov.au)  
<http://www.kismetparkps.vic.edu.au>

*"BUILDING THE FOUNDATIONS FOR SUCCESS AND HAPPINESS"*

November 2019

Dear Parents

### PARENT VOLUNTARY CONTRIBUTION

School Councils are able to invite parents to pay a voluntary contribution for any item or purpose. In 2020, the school will request a total of \$90.00 per family towards the Kismet Building Fund.

The **Kismet Building Fund** is a Tax Deductible voluntary payment of \$90.00 per family.

Building Fund donations fund all classroom and building refurbishments and general maintenance of school facilities.

As Building Fund contributions are tax deductible, a separate receipt will be issued for any donations to the fund to allow families to make a claim on their income tax.

Your donation supports School Council in providing a safe and pleasant learning environment for our students.

We thank you in anticipation of your support of our school.

Glenn Campbell  
School Council President

Glenn McConnell  
Principal