



# Kismet News

McEwen Drive Sunbury. Victoria 3429 Phone: (03) 9744 4566  
Email: [kismet.park.ps@edumail.vic.gov.au](mailto:kismet.park.ps@edumail.vic.gov.au) Website: <http://kismetparkps.vic.edu.au>

*Building the Foundations for Success and Happiness*

30 January 2020

Wednesday 12 Feb	3:30-6:30pm Parent Teacher Interviews
Thursday 13 Feb	3:30-6:30pm Parent Teacher Interviews
Monday 17th February	School Council
Thursday 20 February	Interschool Twilight Swimming Sports
Tuesday 3 March	Division Swimming Sports
Wednesday 4 March	House Athletics Sports (Years 3 to 6)
Thursday 5 March	Family Night Activities
FRIDAY 6 MARCH	<b>CURRICULUM DAY (Students do not attend school on this day)</b>
Monday 9 March	<b>Labour Day Holiday</b>
Tuesday 10 March	House Athletics Sports back up date (in case of inclement weather)
Monday 16 March	<b>SCHOOL PHOTO DAY</b>
Monday 16 March	School Council

## Curriculum News

Welcome back to school! We hope you have had a fun filled summer with your family. The Kismet team have worked through the break to prepare for another exceptional year for all students. Teachers have returned to classrooms over the break to work their magic and create engaging learning environments.

During our very first curriculum day we celebrated the work and successes from 2019 and set goals in our Annual Implementation Plan to ensure we continue to strive for excellence and build on the work we are committed to - improving outcomes for all students.

## Communication & Information

Our teachers do an excellent job of communicating information regarding our programs. There are a number of ways you will be able to find out about your child's learning at school and stay informed, these include:

- Compass - please ensure you have access to the Compass app, this is our primary source of communication with parents and the school community.
- Curriculum Newsletters - these will be sent via compass in Week 3, prior to the interviews, if you have questions around this you will be able to discuss it during your parent teacher interview
- Newsletter curriculum updates - fortnightly updates on the learning happening in classrooms across the school.
- Social Media and School Website - facebook and the school website will regularly be updated to share and celebrate the learning
- See Saw - this app provides opportunities for your child's teacher to share what they are doing in the classroom Log in details for your child's class will be sent home soon.
- A phone call or See Saw message is an efficient way to communicate with your child's teacher however, please remember that our teachers are with students throughout the day and will return the call/email as soon as they are able. At times, this may be the next school day and there is no expectation for our teaching staff to be communicating outside of school working times.
- Parent teacher interviews - one on one meetings with your child's teacher



## PARENT TEACHER INTERVIEWS

These sessions are a great opportunity to meet your child's teacher, hear about their expectations and how the class will operate. Teachers will also spend time explaining the key learning the class will be focussed on during term 1. These sessions will be held at the following times:

- Wednesday 12<sup>th</sup> February at 3:30 - 6:30 pm
- Thursday 13<sup>th</sup> February at 3:30 - 6:30pm

Interview times will be booked via Compass. Bookings will be open on Monday and you will receive a notification when this occurs.

## PREP ASSESSMENTS

Today Prep Assessment invitations were sent out to families with students in Prep. This invitation included information about booking your assessment through COMPASS. Please contact the office on 97444566 if you require any assistance with making your booking. Our prep assessment program will take place on the following 4 days:

Wednesday February 5

Wednesday February 12

Wednesday February 19

Wednesday February 26



## COMPASS

As part of the school's efforts to effectively communicate with our community we use the 'Kismet Park Primary School Compass app.

Key features of the Compass include:

- A prompt and efficient way for you to keep up to date.
- Absentee Note - you can enter an absence for your child directly from your device.
- No more lost notes in the bottom of a schoolbag. You will be able to find notes and permission slips on the App.
- You can approve and pay for excursions
- Book parent-teacher conferences
- View the school calendar
- View students reports To install this free app please go to Google Play or the Apple App store. Log in details will be sent home to new families next week. Log in details received in 2018 continue to be active for all other users.



## Seesaw

The Seesaw app supports communication of student learning between the classroom and home, giving families an immediate window into their child's school day and makes communication with teachers seamless. Seesaw is used to share the information including audio, video and photos of students learning and samples of work with parents. Seesaw is available for free from the App Store and Google Play. In the coming weeks classroom teachers will be inviting you to create an account which allows access to their child's classroom portal.

## Communication Bags

Parents and students are reminded that all students are expected to use our blue communication bag to carry important hard copy messages (including newsletters) to and from school. Communication bags can be purchased from the office for \$10.



## Coronavirus Update

This morning we sent out a COMPASS notification sharing updated information from the Department of Education regarding the Coronavirus outbreak. Please read the attached fact sheet and call the school if you need to discuss your situation further.

Everyone is reminded that you can protect against infections by practising good hand hygiene and respiratory hygiene. Cover your mouth and nose when coughing and sneezing with a tissue, or cough into your elbow, dispose of the tissue into a bin and then wash your hands afterwards. Wash your hands regularly, after using the toilet, and before eating. Teachers will be promoting good hygiene as part of our start up program.

Health promotion materials are available below:

Wash your hands regularly - poster

Cover your cough and sneeze - poster

Be a Soapy Hero!



## QKR

QKR can be used to make payments to the school and to place **Canteen orders**. Qkr! by MasterCard can be downloaded for free from Apple's app store for iPhones (iPads should download the iPhone app) or from Google Play for Android phones and tablets.

## Hours of Supervision

Please remember students should arrive at school from 8:40am and leave grounds after school by 3:30pm. Grounds are supervised from 8:40 – 8:55am and from 3:15 – 3:30pm. If you need to access the school earlier in the morning and/or later in the afternoon than these times we do have an excellent Before & After School program which is operated by Extend. For further information about this program please visit their website at [www.extend.com.au](http://www.extend.com.au) or call on 1300366437.

## Personal Goods Brought to School at Owner's Risk

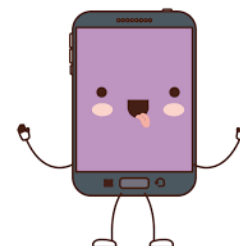
The Department of Education does not hold insurance nor does it accept responsibility for private property brought to school by students, staff and visitors and it will generally not pay for any loss or damage to such property. At Kismet Park we discourage the bringing to school of unnecessary, expensive or precious toys or sporting equipment.

## MOBILE PHONES IN SCHOOLS

### STUDENT MOBILE PHONES and WEARABLE DEVICES

As announced by the Minister for Education last year:

- From Term 1 2020, students who choose to bring mobile phones (or a wearable device such as an Apple watch) to school must have them switched off and securely stored during school hours.
- Exceptions to the policy may be applied if certain conditions are met. Exceptions can be granted by the principal. Exceptions must be documented. Where an application for an exception is received I will be seeking advice from the Department during the process of information my decision to ensure my actions reflect the Minister's intention.
- Where students bring a mobile phone (or a wearable device such as an Apple watch) to school, it must be turned off and handed in to the school to be stored until the end of the school day.



To help us establish the number of devices to be stored and to ease congestion at the office during the first three days of school we are collecting devices from classrooms. From Monday 3 February onwards students will come to the school office before 8:55am and hand their device in for storage. Devices can then be collected from the office at the end of the day. Please let your child /ren who bring a mobile phone (or a wearable device such as an Apple watch) to do the following:

- Turn their mobile phone / (or a wearable device such as an Apple watch) off when they arrive at school.

- Hand their mobile phone (or a wearable device such as an Apple watch) to staff members who are collecting them from classrooms. Sign their phone in on the sign in sheet provided.
- Collect and sign out their phone at the end of the school day (collection points will be announced during the day).

We appreciate your support with the implementation of the Minister's new policy. Further details about school processes will be sent out next week.

Information is also available on the Department's website at:

<https://www.education.vic.gov.au/parents/going-to-school/Pages/Mobile-phones-in-schools.aspx>

A copy of our Mobile Phones and Smart Watches is available on COMPASS at: <https://kismetparkps-vic.compass.education/Communicate/SchoolDocumentation.aspx>

## Health and Wellbeing

Our staff are committed to the health and wellbeing of our whole community. We will communicate regularly through the newsletter or social media ways in which we are working to engage students in activities that strengthen their social and emotional wellbeing. We have set the following actions in our annual goals:

- *Engage students in health and wellbeing programs that have a positive and significant impact on attitudes to learning, social relationships and student achievement.*
- *Teachers incorporate social and emotional learning programs into their classroom to improve student engagement in learning to have a positive impact on outcomes.*
- *Promote a healthy school environment for staff, students and families through policies and processes and partnerships with parents and community.*



## Our School Pledge

In 1996 the Junior School Council composed a school pledge that remains relevant today. The pledge is a simple affirmation of what it means to be part of our Kismet Park PS Learning Community. Students recite the pledge at school assemblies as a means for building shared pride and recognising the importance of collective responsibility for how students care for one another and the importance of respect for staff, parents and visitors to our school.

It would be appreciated if you could spend the time with your Kismet Park children to discuss the words of the pledge and what it means in actions at school. By reinforcing every child's role in being a considerate, courteous and caring student, we are promoting key characteristics of good citizenship and community spirit.

**We are the children of Kismet Park Primary School.  
To make our teachers and parents proud we use courtesy, consideration and care.  
We will play happily and safely in the yard and strive to make our school a better place to learn.**

## CHILD SAFE

Kismet Park Primary School is committed to child safety. As a community we want children to be safe, happy and empowered. We support and respect all children, as well as our staff and volunteers. We are committed to the safety, participation and empowerment of all children. There is zero tolerance of child abuse, and all allegations and safety concerns will be treated very seriously and consistently with our robust policies and procedures. We meet our legal and moral obligations to contact authorities when we are worried about a child's safety, which we follow rigorously.



Kismet Park Primary School is committed to preventing child abuse and identifying risks early, and removing and reducing these risks. We have human resources and recruitment practices for all staff and volunteers. Our school is committed to regularly training and educating our staff and volunteers on child abuse risks. As a community we support and respect all children, as well as our staff and volunteers. We are committed to the safety of all children. Kismet Park Primary School has specific policies, procedures and training in place that support our leadership team, staff and volunteers to achieve these commitments.

At Kismet Park Primary School:

- Everyone connected to our school can help children be safe.
- We have zero tolerance for any abuse of children.
- We already have policies and processes in place to protect the care, safety and welfare of children.

## Restoring Resilience

- There are clear boundaries about how adults in our school community may interact with the children. These are set out in our school's Child Safe Code of Conduct.

A copy of our Child Safe Policy and Child Safe related documents are available on our school website.

Please speak to Glenn or Andrea if you have concerns about the safety or wellbeing of any child.

The team at Restoring Resilience aim to teach and empower individuals and communities. We have worked with Restoring Resilience in workshops for professionals and would highly recommend their training programs to any parents interested in learning more about strategies to support children presenting with various behavioural challenges.

More information about the workshops they conduct can be found on their website [restoringresilience.com.au](http://restoringresilience.com.au). The upcoming program may interest parents with teens. Tuning Into Teens Workshop



### RESTORING RESILIENCE TUNING INTO TEENS

PROVEN, AFFORDABLE, ACCESSIBLE,  
INFORMATIVE AND LIFE CHANGING

Get support to manage teen behaviour and see real changes between you and your teen. The goal of this workshop is to support parents, to learn strategies to manage difficult teen emotions and behaviours, increase awareness and understanding, bringing harmony to the family.

As a TAFE industry trainer for over 30 years and a family/teens Psychotherapist, I have delivered this program to over 100 parents with results as evidenced by parent testimonials. This course, developed by Melbourne University, is highly acclaimed and evidence based.

#### COURSE DETAILS

Day/night online classes available to choose from  
6x2 hour sessions for \$40 per session, that is only  
\$20 per hour!

Please call Phyllis to discuss couple discount.

For all enquiries or bookings please contact  
Phyllis Traficante: 0412 306 965

## ARE YOU ELIGIBLE FOR CSEF? (School funding)

### Criteria 1 – Eligibility

To be eligible for the fund, a parent or legal guardian of a student attending a registered Government or non-government Victorian primary or secondary school must:

\* A special consideration eligibility category also exists. For more information, see: [www.education.vic.gov.au/csef](http://www.education.vic.gov.au/csef)

Parents who receive a Carer Allowance on behalf of a child, or any other benefit or allowance not income tested by Centrelink, are not eligible for the CSEF unless they also comply with one of (a) or (b) above.

### Criteria 2 - Be of school age and attend school in Victoria

School is compulsory for all Victorian children aged between six and 17 years of age inclusive.

For the purposes of CSEF, students may be eligible for assistance if they attend a Victorian registered primary or secondary school. Typically, these students are aged between five and 18 years inclusive.

CSEF is not payable to students attending pre-school, kindergarten, home schooled, or TAFE.

### CSEF payment amount

The CSEF is an annual payment to the school to be used towards camps, sports and/or excursion expenses for the benefit of the eligible student.

- Primary school student rate: \$125 per year.

The CSEF is paid directly to your child's school and will be allocated by the school towards camps, sports and/or excursion costs for your child.

THE  
EDUCATION  
STATE

CAMPS, SPORTS AND EXCURSIONS FUND (CSEF)

# KISMET KITCHEN MENU 2020

PLACE YOUR ORDERS ONLINE BY 8:40AM USING THE QKR APP  
(pronounced quicker!) SEE BACK FOR DOWNLOAD INSTRUCTIONS

- EVERYDAY CHOICE
- CHOOSE CAREFULLY
- OCCASIONALLY



## MISCELLANEOUS

- Tomato Sauce (squeeze pack) .30c
- Soy Sauce (squeeze pack) .30c
- Paper Bag .20c



## HOT FOOD (Available everyday Tuesday—Friday)

- Pie—Four n Twenty Light \$4.00
- Party Pie \$1.30
- Sausage Roll—Four n Twenty \$3.50
- Dim Sim (low salt steamed) \$1.20
- Chicken Nugget \$1.00
- Lasagne \$4.00
- Macaroni Cheese \$4.00
- Margarita / Hawaiian \$4.00
- Noodle Cup: Chicken / Beef \$3.50

## TUESDAY ONLY

- Hot Dog \$4.00 with sauce \$4.30

## WEDNESDAY ONLY

- Potato Cake—Ovenbaked \$1.20

## THURSDAY ONLY

- Chicken Burger—Cumbed chicken, lettuce, tomato & mayo \$5.50

PLEASE NOTE:

**CANTEEN IS CLOSED ON A MONDAY**

## SANDWICHES (WHOLEMEAL & WHITE)



- Vegemite \$2.50
- Vegemite & Cheese \$3.00
- Ham \$3.50
- Salad \$4.00
- Ham & Salad \$4.50
- Cheese \$2.80
- Cheese & Tomato \$3.30
- Ham, cheese & tomato \$4.00
- Ham & Cheese \$3.80
- Jam (Strawberry) \$2.50
- Rolls (White Only) Add .30c
- Toasted Sandwiches Add .20c

Salad consists of: Lettuce, Tomato, Cucumber, Beetroot and Grated Carrot.

## WRAPS



- Snack Wraps (1 sweet chilli tender, lettuce, mayo) \$4.00
- Large Snack Wrap (2 SC tenders, lettuce, mayo) \$6.00
- Sweet Chilli Wrap (2 sweet chilli tenders & salad) \$6.00
- Mexican Wrap (2 sweet chilli tenders, salsa, lettuce & sour cream) \$6.00
- Ham & Salad \$5.00
- Salad \$4.50

## DRINKS

- Big M School Smart—Chocolate & Strawberry \$2.00
- Water - 350ml \$1.00
- Just Juice—Apple, Apple & Blackcurrant, Orange, Paradise Punch \$2.00
- Glee—Bubble-gum / Grape, Tropical, Raspberry, Blackcurrant \$2.50

## TREATS



- Red Rock Chips—Honey Soy \$1.50
- JJ's—Burger, Salt n Vinegar, Chicken \$1.50
- Gingerbread Kids \$2.00
- Popcorn—Salt n Vinegar, Cheese \$1.50
- Mamee noodle snacks—Chicken BBQ \$1.00

## COUNTER SALES ONLY—NOT TO BE ORDERED ONLINE PLEASE

- Frozen Fruit Cups—Apple & Orange \$1.00
- Icy Pole—Lemonade Icy Twirl \$1.50
- Ice Cream Cup—Low fat vanilla \$1.00
- Callipo—Raspberry \$1.00
- Rice Cakes .20c
- Fresh Baked Items vary in price— .40c—\$1.00
- Apple Slinky (20c for your own apple) .60c—\$1.00
- Watermelon or Seasonal Fruit .20c—\$1.00
- Rainbow or Chocolate Paddlepop \$1.80

Orders can be placed: **ONLINE** (Preferred—no cash required) by 8:40am- if your using a reusable bag / paper bag from home please write "ORDERED on QKR" .. **Recess & Lunch Counter sales 11-11:15am & 1:30—1:45pm**

Orders with Cash— Please clearly write your child's name & Grade, items you wish to purchase with the prices and total of cash enclosed. (PLEASE REMEMBER TO PAY FOR MISCELLANEOUS ITEMS— paper bag etc.)



## EXTEND UPDATE.

### Before School Care

Monday 10.02	Tuesday 11.02	Wednesday 12.02	Thursday 13.02	Friday 14.02
Playdough Creations	Group Activity: Bumblebee tag	Origami	Free Arts and Crafts	Group game: Red light, Green light

### After School Care

Monday 10.02	Tuesday 11.02	Wednesday 12.02	Thursday 13.02	Friday 14.02
Cooking: Mini Muffin damper	Arts and Crafts: Suncatchers	Puzzles	Down ball	Ice painting
Arts and Crafts: Collage	Gardening	DIY socks puppets	Painting with wool on canvas	Board games

## The Extend Superstar is...

**Mason Dowsett...** for respect. Way to go Mason!

## What's Been Happening

What an exciting holiday program we had. It was filled with excursions to 234 fun galore, Melbourne Star and Archie Brothers.. We had a visit from the coaches from Saints football club. We also did alot of arts and crafts that children were able to take home. This week the children enjoyed outdoor play, garden and making slime and wonder dough. We also can't wait to meet our new preps.



# Novel coronavirus (2019-nCoV)

## Factsheet for school students and children

Last updated 29 January 2020

An outbreak of novel coronavirus (2019-nCoV) was detected in Wuhan, China in late December 2019. Cases have been reported predominantly in the city of Wuhan, in the Hubei province of China, as well as some other Chinese cities and countries, including two confirmed cases in Victoria, Australia.

### What is this virus?

Coronaviruses can make humans and animals sick. Some coronaviruses can cause illness similar to the common cold and others can cause more serious diseases, including Severe Acute Respiratory Syndrome (SARS) and Middle East Respiratory Syndrome (MERS).

The virus seen in Hubei Province, China is called 'novel' because it is new. It has not been detected before this outbreak. Most people infected live in, or travelled to, Hubei Province, China. There have been cases of 2019-nCoV reported in other Chinese provinces and other countries. It is likely that the virus originally came from an animal, and there is now evidence that it can spread from person-to-person.

### What are the symptoms?

Symptoms can include fever, cough, sore throat, or shortness of breath. Symptoms can take up to 14 days to develop.

### What if my child is well, and returning to school after being in Hubei province, China or other countries with cases in the last 14 days?

**All students and staff members who have travelled to Hubei Province, China, are advised to stay at home and avoid public settings, including attendance at schools and early learning centres, until 14 days after last being in Hubei province, China.**

Children and staff who are well and have travelled to **other provinces in China, or any other areas where there have been reported cases, are NOT recommended to be excluded from schools and child care services unless the following applies:**

**The person is a confirmed case of novel coronavirus**

**The person is a close contact with a confirmed case of novel coronavirus in the past 14 days**

### What if my child feels sick now or within 14 days of being in Hubei Province, China or another part of China?

If your child has a cough, sore throat or shortness of breath, they must be excluded from school and be reviewed by a doctor.

Seek medical attention but first place a mask on the student if you have one and call the doctor or hospital before you attend. Tell them your child has been in Hubei province, China, or the location of travel within China.

When you get to the hospital or doctor's clinic, tell them where your child has travelled in China and whether this included Hubei Province. Ensure a mask is placed on your child before or as soon as you arrive at the medical facility.

If your child has severe symptoms, such as shortness of breath:

Call 000 and request an ambulance, and

Inform the paramedics where your child has been in China.

### How can I help prevent the spread of 2019-nCoV?

Practising good hand and sneeze/cough hygiene is the best defence. The most important actions are:

Wash your hands often with soap and water

Cough and sneeze into your elbow

## Where can I get more information?

For Victorian updates to the current incident, go to: <https://www.dhhs.vic.gov.au/novelcoronavirus>

For national updates: <https://www.health.gov.au/news/latest-information-about-novel-coronavirus>

For international updates: <https://www.who.int/westernpacific/emergencies/novel-coronavirus>

WHO resources <https://www.who.int/health-topics/coronavirus>

Authorised and published by the Victorian Government, 1 Treasury Place, Melbourne.

© State of Victoria, Department of Health and Human Services, January 2020.



## Pay using Qkr! at Kismet Park Primary School

The Qkr! app is available for families of students at Kismet Park Primary. Qkr! by MasterCard can be downloaded for free from Apple's app store for iPhones (iPads should download the iPhone app) or from Google Play for Android phones and tablets. After downloading the app and registering, simply scan the QR code on the left using the Qkr! Code scanner or type **KISPPS** after tapping the magnifying glass in the top right of the home screen of Qkr!, and then the app will always recognise you as part of Kismet Park Primary in future to make payments even easier. You can order and pay for **Canteen orders** right now using Qkr! To make payments immediately why not download it today and take a look at our school on Qkr! We will expand QKR to include payments for **bookpacks, excursions and other items** in 2016. *NB: If you do not wish to order and pay for lunch orders via QKR!, you can still order in the traditional way via cash to the canteen.* All feedback to the school office is very welcome.